

### Outdoor Mini Dome Camera

This mini dome camera is designed for indoor or outdoor placement. It has a thick, hardened aluminum alloy shell and has a tough acrylic clear dome. It measures only 3.11 inches wide and about 2.17 inches tall, making it a perfect camera for placing on walls or ceilings where you don't have a lot of room. Aim and setup is easy. Once installed the mounting screws cannot be reached without disassembling the camera. It runs on 12VDC and includes an attached 12 inch long combination power cord/video cord.



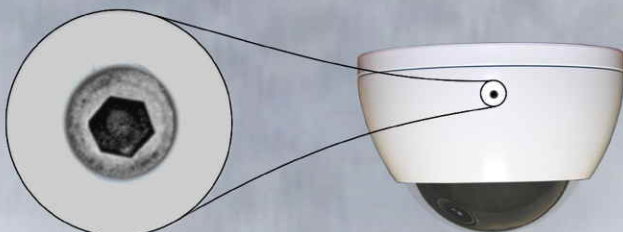
### Vandal Resistant Base Construction

The extremely hard metal alloy base is designed to be attached to a flat surface (ceiling or wall) with 4 screws using the mounting holes built into the base. You cannot access these screws until you remove the camera dome housing.



### Anti-Tamper Set Screw

Camera aim can be adjusted only after removing the dome and dome housing. To remove those parts you must first remove (or loosen) the anti-tamper set screw built into the camera base. Then rotate the dome and dome housing and remove them in one piece. After removal the dome and dome housing separate easily.



### General Specifications

Video Sensor: 1/3" color Sony Super HAD CCD
Horizontal Resolution: 420 TV lines
Lens: 3.6mm optical glass F2.0
Scanning System: 2:1 Interlace
Light Level: 0.5 Lux / F2.0
Video Signal Synchronization: Negative internal
Video Signal Level: 1Vp-p, 75 Ohm impedance
Signal to Noise Ratio: >50dB (AGC off)
Auto-Gain Control: YES
Auto-White Balance: YES
Auto-Backlight Compensation: YES
Auto Electronic Shutter: 1/60 - 1/100,000 sec.
Power: 12VDC, (100mA +/-10% nominal)

### Recommended Environment

Operating Temperature:	-10 degrees to +50 degrees (C) +14 degrees to +122 degrees (F)
Storage Temperature:	-30 degrees to +60 degrees (C) -22 degrees to +140 degrees (F)
Weatherproof Level:	IP66 for Outdoor/Indoor Placement

### Physical Specifications

Approx. Dim.: 79.0mm x 55.0mm (3.11" x 2.17")
Approx. Weight: 363g (0.8lbs)

### Ball Assembly and Board Camera



The board camera is contained within a ball-shaped assembly that fits in a socket in the camera base. Pressure from the dome housing keeps the camera from shifting position when the dome and dome housing are in place.

A 3.6mm optical glass lens on the board camera provides a 92° field of view (approximate).

### Sony Super HAD Video Sensor Provides Superior Video

Sony Super HAD CCD video sensors are designed to provide a superior image in low light conditions.

**HAD** stands for **Hole Accumulation Diode**, which is a manufacturing technique developed by Sony Corporation to reduce the effect of so-called "dark" current that originates spontaneously in CCD sensors in the absence of light. Heat and unavoidable imperfections at the atomic level can cause random electrons to move about in the semi-conductor of the imaging chip. This electron displacement creates a positive charge, or a "hole". By placing another semi-conductor layer (a diode layer) beneath the CCD imaging layer this charge can be automatically accumulated and pulled out of the imaging layer, thus eliminating "dark" current video noise at the source. The end result is a clearer image generated in low light conditions, making this camera a great choice for settings where you need to deal with unavoidable shadows and large areas that are deliberately kept in subdued light.